



NYNE OVERSEAS

MSME
सुक्ष्म, लघु एवं मध्यम उद्यम
MICRO, SMALL & MEDIUM ENTERPRISES

91366 10085 • E-mail : Nyneoverseas@hotmail.com



NYNE OVERSEAS



Company Profile

NYNE OVERSEAS was established in 2023 and started as a Butt Weld Pipe Fittings trading company in the beginning. NYOS has grown up rapidly to be a global fitting supplier based on strong financial structure, large volume of inventory/stock, biggest manufacturing facilities, accumulated technologies and experiences. We have supplied our products to the world wide major customer's comprehensive industrial area such as Oil & Gas, Chemical & Petrochemical, Water treatment, Nuclear & Power Plant, Offshore platform & Shipbuilding. Our products are applicable for any kinds of severe operating condition such as high pressure and high temperature or cryogenic condition. We are always doing our best to bring up NYOS to be the world's leading company through drastic investment activities in the belief that the best quality is the solid bastion of business survival and customer's satisfaction. In the future, NYOS will provide more value to the customers based on our customer-first policy & quality- first policy.

We are active in virtually all industrial sectors. Our employees have specialist knowledge of sourcing, project management, logistics and stock planning and work closely together with our customers in the Industry and Energy markets. The combination of global logistics and knowledge of products and customer applications makes NYOS a leading company in its markets.

Application Areas

We offer a wide range of Industrial Products which is used in various industries. Such as :

- Sugar Industries • Chemical Industries • Fertilizer Plants • Pharmaceutical Industries • Oil & Gas Industries • Power Plant Industries • Automotive Industries • Pulp & Paper Mills • Heat exchanges • Energy Industries • Construction Industries





NYNE OVERSEAS

Mob.: 91366 10085 • Tel.: 022-6743 7164 • E-mail : Nyneoverseas@hotmail.com



COR-TEN

Weather Resistance Steel

"MANUFACTURER OF CORTEN AIR PRE HEATER TUBES (APH TUBES) ASTM A 423 ,BS 6323 BOILER TUBES S 3059 PART I & II ,COLD DRAWN SEAMLESS TUBES IBR TUBES, HEAT EXCHANGER SEAMLESS TUBES, CONDENSOR TUBES DUPLEX TUBES, STANDARDS SUCH AS ASTM A 423 (CORTEN A), IRSM41, ASTM A588, BS 6323, BS-3059(IBR), ASTM A-588, SA 210 GR. AL, IS-3601, IS-1914, DIN 2391, ST37, ST52, ASTM A178, ASTM/ SA 214, ASTM A192,ASTM A 334 ,ASTM A 106 ,A 53, API 5L ,ETC. CORTEN STEEL / CARBON STEEL / S.S. ERW APH 304/316/347/321 GR. / HEAT EXCHANGER TUBES & CARBON STEEL / ALLOY STEEL -T5/T11/T221191,C.D.S. (COLD DRAWN SEAMLESS) BOILER / PRECISION TUBES (IBR / NON-IBR) WITH COMPLETE RANGE OF RELEVANT FITTINGS.





SOCKETWELD FITTINGS



Stainless Steel	: ASTM A182, F304,304L,304H,316, 316L,317,317L,321,310,347,904L
High Nickel	: Monel, Nickel, Inconel, Hastelloy
Carbon Steel	: ASTM A105,A694 F42,A350 LF2
Alloy Steel	: ASTM A182 F1,F5,F9,F11,F22,F91
Size	: 1/4" NB TO 4" NB
Class	: 3000#, 6000#, 9000#

- Stainless Steel & Duplex Steel
- Nickel Alloy & Copper Nickel Alloy
- Carbon Steel & Alloy Steel

Types : Elbow, Tee, Union, Cross, Coup Bushing, Plug, Swage Nipple, Welding Boss, Hexagon Nipple, Barrel Nipple, Welding Nipple, Parraler Nipple, Street Elbow, Hexagon Nut, Hose Nipple, Bend, Adapter, Insert, Weldolet, Elbowlet, Sockolet, Thredolet, Nipolet, Letrolet,etc.



FLANGES.....

- Stainless Steel
- Nickel Alloy & Duplex Steel
- Carbon Steel

Stainless Steel	: ASTM A182, F304,304L,304H,316, 316L,317,317L,321,310,347,904L
Duplex & Super Duplex	: UNS S31803, UNS S32750, UNS S32760,
Hastelloy Alloy	: ASTM B564 Hastelloy B2, C276, C22
Incoloy Alloys	: ASTM B564 Alloy 20, Alloy A286 Alloy 800H/800HT, Alloy 825,
Inconel Alloys	: ASTM B564 Alloy 600, Alloy 601, Alloy 625, Alloy 718, Alloy 725,
Monel Alloys	: ASTM B564 Monel 400, Monel K500.
Carbon Steel	: ASTM A105,A694 F42,A350 Lf2
Alloy Steel	: ASTM A182 F1,F5,F9,F11,F22,F91
Size	: 1/2" NB TO 72" NB
Class	: 150#, 300#, 600#, 900#, 1500# & 2500#.



TYPE

- SLIP-ON FLANGE
- LAP JOINT FLANGE
- WELDNECK FLANGE
- ORIFACE FLANGE
- LONG WELD NECK FLANGE
- THREADED FLANGE
- SOCKETWELD FLANGE
- BLIND FLANGE (DUMMY FLANGE)
- RTJ FLANGE
- TABLE FLANGES (D, E, F, H TABLE)



BUTTWELD FITTINGS.....



- Stainless Steel** : ASTM A403, WP304,304L,304H,316, 316L,317,317L,321,310,347,904L
- Duplex & Super Duplex** : UNS S31803, UNS S32750, UNS S32760,
- Hastelloy Alloy** : ASTM B366 Hastelloy B2, Hastelloy C276, Hastelloy C22
- Incoloy Alloys** : ASTM B366 Alloy 20, Alloy 800H/800HT, Alloy 825, Alloy A286
- Inconel Alloys** : ASTM B366 Alloy 600, Alloy 601, Alloy 625, Alloy 718, Alloy 725,
- Monel Alloys** : ASTM B366 Monel 400, Monel K500.
- Carbon Steel** : ASTM A234 WPB,A420 WPL3,A420 WPL6, MSS-SP-75 WPHY 42/46/52
- Alloy Steel** : ASTM A234WP1,WP5,WP9,WP11,WP22
- Size** : 1/4" NB TO 24" NB (seamless)
4" NB TO 72" NB (welded)
- Wall Thickness** : Sch. 5s To Sch. XXS

TYPE OF BUTTWELD FITTINGS

- ELBOW (1D/1.5D/3D/5D)
- 180° RETURN BEND / MITER BEND
- EQUAL TEE
- REDUCING TEE / CROSS TEE
- LONG STUBEND
- SHORT STUBEND
- REDUCER (CON./ECC.)
- END CAP / DISH END CAP



STAINLESS STEEL PIPES & TUBES

Stainless Steel

ASTM / ASME SA 312 GR. TP 304, 304L, 304H, 309S, 309H, 310S, 310H, 316, 316TI, 316H, 316LN, 317, 317L, 321, 321H, 347, 347H, 904L.

ASTM / ASME SA 358 CL 1 & CL 3 Gr. 304, 304L, 304H, 309S, 309H, 310S, 310H, 316, 316TI, 316H, 321, 321H, 347, 347H.

Nickel Alloy

ASTM / ASME SB 161/B725/B730 UNS 2200 (NICKEL 200)

ASTM / ASME SB 161/B725/B730 UNS 2201 (NICKEL 201)

ASTM / ASME SB 165/B725/B730 UNS 4400 (MONEL 400)

ASTM / ASME SB 729/B464/B468 UNS 8020 (ALLOY20 / 20 CB 3)

ASTM / ASME SB 423/B705/B704 UNS 8825 (INCONEL 825)

ASTM / ASME SB 167/B517/B516 UNS 6600 (INCONEL 600)

ASTM / ASME SB 407/B514/B515 UNS 8810/8811 (INCONEL 800/HT)

ASTM / ASME SB 444/B705/B704 UNS 6625 (INCONEL 625)

ASTM / ASME SB 622/B619/B622 UNS 10276 (HASTELLOY C276)

Duplex Steel

ASTM / ASME SA 790 UNS NO: 31803 / 32760

Carbon Steel

ASTM / ASME A 53 GR. A & B, ASTM A 106 GR. A, B & C. API 5L GR. B, API 5L X 42, X 46, X 52, X 60, X 65 & X 70. ASTM / ASME A 691 GRA, B & C

Alloy Steel

ASTM / ASME A 335 GR P 1, P 5, P 9, P 11, P 12, P 22, P 23, P 91





PRODUCT RANGE



Stainless Steel : 304/ 304L/ 316/ 316L/ 310/ 904L Etc.
Design : 1PC / 2PC/ 3PC,
Ends : Screwed/ Socket Weld Flanged
Threaded, Size : 15 mm To 100mm
Flanged End, Size : 15mm To 250mm
High Nickel Alloy : Monel, Nickel, Inconel, Hastalloy, Bronze, Brass, Titanium
Rating : 150#/1300#/ 800 #/1500 #
Ends : Screwed / Socket Weld/ Flange End)

FORGED BALL VALVE

BS 6755 / BS 1868

Stainless Steel (Forged), 304, 304L, 316, 316L

ASME B 16.34 API 6D

High Nickel Alloy : Monel, Nickel, Inconel, Hastalloy, Bronze, Brass, Titanium,

Rating : 150#/1300#/ 800# / 1500#

Size : 15 mm To 100 mm,



NON RETURN / SCREWED VALVE



Stainless Steel, Cast Iron : API 609/BS 5155/18S 13095

Size : 15mm To 250mm

Type : Wafer Type, Flange End Type

Ends : Wafer Type/double Flange,

Design : Lug Type

Operation : Lever / Manual Gear

Design : Sure Seal / Replaceable, Rubber Lining

Mfg. Std : BS 5155 / AWWA C 504 API 609/IS 13095

BUTTERFLY VALVE

BS 5352 BS 6755 / BS1813 / BS 6755 ASME B 13.4 DIN 3356

Stainless Steel (Bar Stock)

Rating : 150x300#/800#/1500#, **Size** : 15 Mm To 400 Mm

Forged Carbon Steel S. Steel

Rating : 150# / 300# / 800/1500#, **Size** : 15mm To 400mm

Cast Carbon Steel S.steel Alloy Steel

Rating : 150#/1300#/ 800 #/1500 #, **Size** : 15 Mm To 400 Mm

Cast Iron

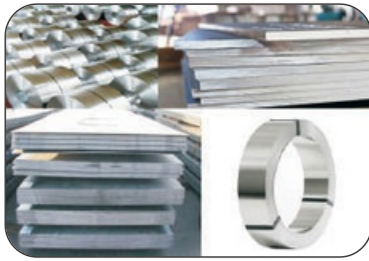
Rating :125 / 150#, **Size** : 25mm To 600mm



GLOBAL VALVE



PRODUCT RANGE



Sheet, Plate & Coil

Stainless Steel Coils, Sheets & Plates as per ASTM A 240 Gr. TP 202, 304, 304L, 304LN, 309, 309S, 309H, 310S, 310H, 316, 316L, 316H, 316LN, 316TI, 317, 317L, 321, 321H, 347, 347H, 348, 348H, 409, 410, 420, 430 Etc. **Alloy Steel Plates** as per ASTM A 387 Gr. 2, 5, 9, 11, 12 & 22 in class 1 & 2, ASTM A 204, Gr. A & B, DIN 17175 Gr. 15Mo3 & 16Mo3 with IBR Test Certificate. **Carbon Steel / Boiler Quality Plates** as per IS 2062 Gr. A, B & C, IS 2002 Gr. 1& 2, ASTM A516 Gr. 60 & 70 ASTM A515 Gr. 70.

Other Alloys : Monel, Nickel, Inconel, Hastalloy, Copper, Brass, Bronze, Titanium, Tantalum, Bismuth, Aluminium, High Speed Steel, Zinc, Lead Etc.

Duplex & Super Duplex Steel : UNS S31803, UNS S32750, UNS 532760, 904L, Alloy 20

Types : Sheet, Plates, Strips Etc.

Elements : Nippolet, Elbowlet, Latrolet, Sockolet & Weldolet, Thredolet

Stainless Steel ASTM A-182, F304L, 316L, 310, 904l

Carbon Steel ASTM A 105

Size : B/W Standard & Extra Long 1/8" To 24", Sch. 160 1/2" To 6"
3000# Threaded And S/W 1/8" To 4", 6000# Threaded And S/W 1/2" To 2"

Rating : 3000# (for Small Bore Branches)

Ends : Nippolet : Plain End, Sockolet : S/W End,
Weldolet & Elbowlet : B/W, Letrolet : S/W, B/W (as Per Branch Size)

Grade : Duplex, Super Duplex, Inconel, Monel, Hastelloy C, Nickel Alloy, Alloy 20 Etc.

Dim Standard : MSS-SP-97



OLETS



Ferrule Fittings

Stainless Steel : ASTM A182 F304/ 304L/ 304H/ 316/ 316L/ 317/ 317L/ 321/310/347/ 904L Etc.

Carbon Steel : ASTM A105 / A694 F42/46/ 52/56/ 60/65/70 /A350 LF3/ A350 LF2. **Alloy Steel** : ASTM A182 F1/ F5/ F9/ F11/ F22/F91 Etc. **Duplex & Super Duplex Steel** : UNS S31803, UNS S32750, UNS S32760

Other Alloys : Monel, Nickel, Inconel, Hastalloy, Copper, Brass, Bronze, Titanium, Alloy 20 Etc. **Types** : Nipples, Adaptors, Crosses, Union Ball Joints, Reducing Bushing, Reducers, Pipe Caps, Couplings, Pipe Plug, Hollow Hex Plug, Elbow, Reducing Union, 90 Deg. Union Elbow, Reducing 90 Deg. Union Elbow Etc. Extender Leg 90 Deg. Union Elbow, 45 Deg. Union Elbow, Union Tee, Female Connector, Male Connector, Manifold Tee, Locator Union, Extended Run Leg Union Tee, Reducing Tee, Tribow, ATW Weld Ring, Tube Socket weld To Pipe Butt Weld, Tube Butt Weld To Tube Socket Weld, Port Connector Etc.

Stainless Steel : As per ASTM A276 & A479 Grade 202 / 304 / 304L / 316 / 316L / 316Ti / 317 / 317L / 321 / 310 / 347 / 410 /416/ 420 /430/440C/ 904 / 303 / 17-4PH, 15-5 PH Etc.

Nickel Alloys : Monel, Inconel, Hastelloy, Nickel, Titanium, Alloy 20

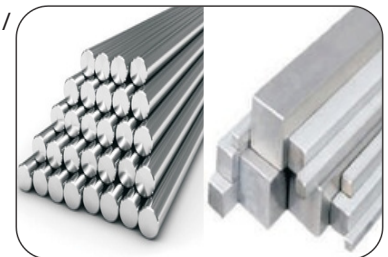
Duplex & Super Duplex : UNS 32205, 31803, 32750, 32760,

Types : Round, Square, Rectangular.

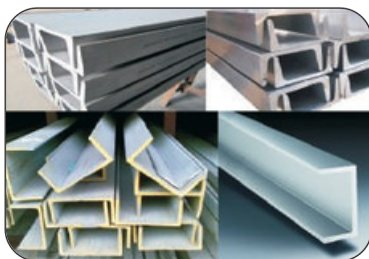
Size : 3mm - 75 mm dia ready stock with Mill Test Certificate

Process : Cold Drawn, Annealed, Export Bright & Black

Tolerance : H9, H11



Round, Square & Hex Bar



Flat, Angle, Channel & Beam

FLATS, ANGLE, CHANNEL & BEAM

Stainless Steel: SA 240 TP 304/ 304L/ 304H/ 316/ 316L/ 316Ti/ 317/ 317L/ 321/ 309/ 310/ 347/ 409/ 410/ 430/ 904L Etc.

Other Alloys : Nickel, Monel, Inconel, Hastelloy, Alloy20, Incoloy, Duplex & Super Duplex, 5M06-254, Carbon Steel, Alloy Steel, Copper, Brass, Cupro Nickel, Aluminium, Titanium Etc.,

Types : Angle, Channel, Flat Bar, Beams Etc.



Third Party Inspection



.....
Agricultural Machinery Equipments

.....
Steel Plant & Rolling Mills Mfg.

.....
Automobile & Heavy Mobile Vehicle

.....
Material Handling Stores



.....
Oil & Gas Industries

.....
Refineries

.....
Food & Beverage Equipments

.....
Chemical Machinery

HEMANK SHAH



NYNE OVERSEAS

REGD. OFFICE : Shop no.8, 65/73, Habib Building, 2nd Panjrapole Lane, C.P. Tank, Mumbai - 400004. • Tel.: 022-6743 7164

91366 10085 • E-mail : Nyneoverseas@hotmail.com

MSME
सूक्ष्म, लघु एवं मध्यम उद्यम
MICRO, SMALL & MEDIUM ENTERPRISES